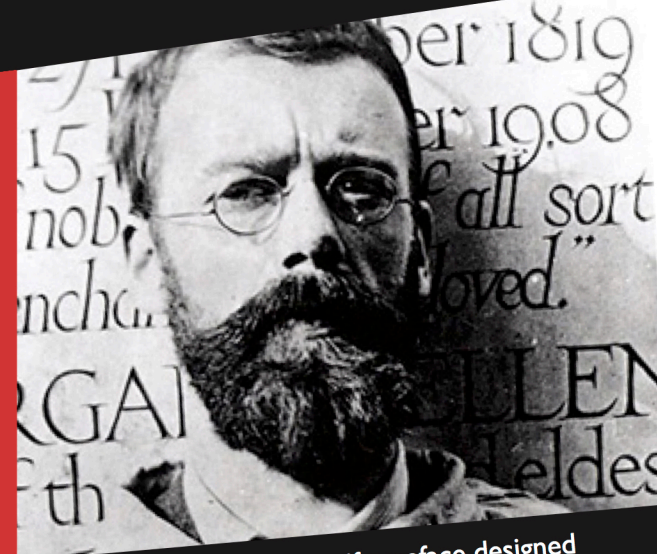


# Gill Sans & Frutiger



Gill Sans is a sans serif typeface designed by a British artist named Eric Gill

Photographer: Howard Coster

### Light

The quick brown fox jumps over the lazy dog

### Regular

The quick brown fox jumps over the lazy dog

### Bold

**The quick brown fox jumps over the lazy dog**

### UltraBold

**The quick brown fox jumps over the lazy dog**

*Gill Sans is a very diverse font, with special characters from weight to weight*

He was Edward Johnston's student who was another typeface designer in England.

Gill sans was heavily influenced by his teacher's Johnston sans typeface. Gill sans was released by Monotype, a corporation that specializes in typeface design, in the late 1920s. Gill sans was considered to fall under the humanist classification.

There are other typefaces that Eric Gill has developed. He developed Perpetua shortly before starting on Gill Sans. After the development of Gill Sans, he designed Joanna in the early 1930s. When Gill Sans was released, it immediately became popular. It was known as the "Helvetica of England" for it appeared everywhere in London from railways, to engine plates, to subway timetables.

Today, Gill Sans is used in name brands such as Tommy Hilfiger, movie titles like Toy Story, and news outlets such as BBC. Interestingly enough, Monotype decided to create a remastered version of Gill Sans in 2015, releasing it as Gill Sans Nova. Their reason being is that they want this new typeface to be a competitor in the 21st century since Gill Sans isn't as popular today. Now, there are a total of 50 styles available to the public to purchase which range from light to ultra bold.

## Identifying Gill Sans

One can identify Gill Sans by looking at certain lowercase letters from its regular font family (Gill Sans regular). It has a flat topped lowercase p and q and a flat bottomed lowercase d. Meanwhile, if you look at the lowercase b, it has a slightly *rounded* bottom that is almost unnoticeable. It's interesting that the lowercase b doesn't have a flat area that resembles that of the d, p and q.

Also, one can distinguish this typeface from the rest because of its lower case, triangular topped t. Another lowercase letter to note is the g, for it has an eye glass figure. However, once the weights increase, the eyeglass shape changes to a regular, one story letter g. This g also has an ear that is parallel to the baseline. Furthermore, the tail of the round Q is curled, creating a small space between the right half of the bowl of the Q and the tail.



progression of the g as the weights increase



The tail is if it were done with a calligraphic pen



the tail of the t goes out and upward

two story g with an ear poking outward

### Other Letters to Note:



Just like the tail of the t, it curves upward



Similar to the Q, the R has a caligraphic leg

# Frutiger

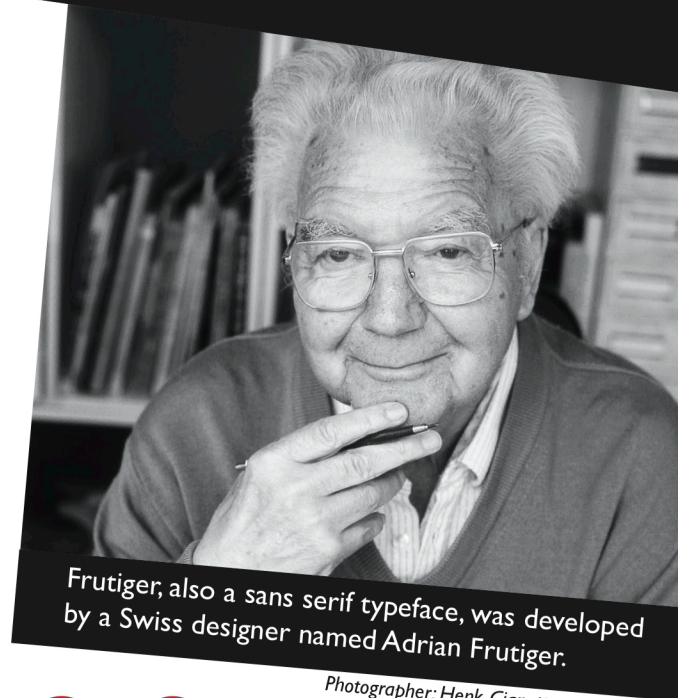
**Like** Gill Sans, Frutiger also falls under the humanist classification. Originally, this typeface was called **Roissy**. Adrian Frutiger was commissioned to develop signs for an airport located in Roissy, France. However, once the airport opened, this typeface caught the attention of many and people wanted to get their hands on it for their own uses. So, in 1976, Frutiger completed the font family and it was released on the market. The corporation that released it renamed the typeface as Frutiger.

This typeface is mainly used for signs in airports, streets and subway stations. Today, some signages can be seen at the John F. Kennedy International Airport.

Some distinctive qualities of Frutiger is that it has a square dot over the letters i and j. Also, letters such as a, b, d, p, and q have square spurs to match the square dots from i and j. Something else to note is that the letters B, E, F and H are more narrower than the other uppercase letters.

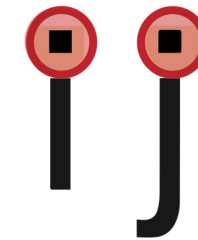


\*Not drawn to scale. References made to emphasize the difference in letter width



Frutiger, also a sans serif typeface, was developed by a Swiss designer named Adrian Frutiger.

Photographer: Henk Gianotten

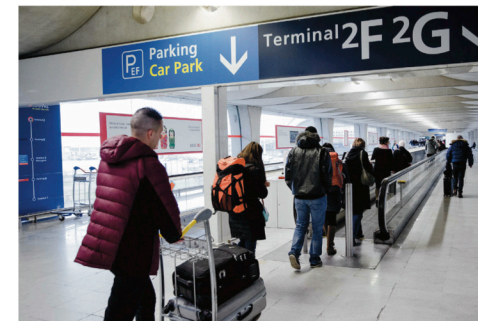
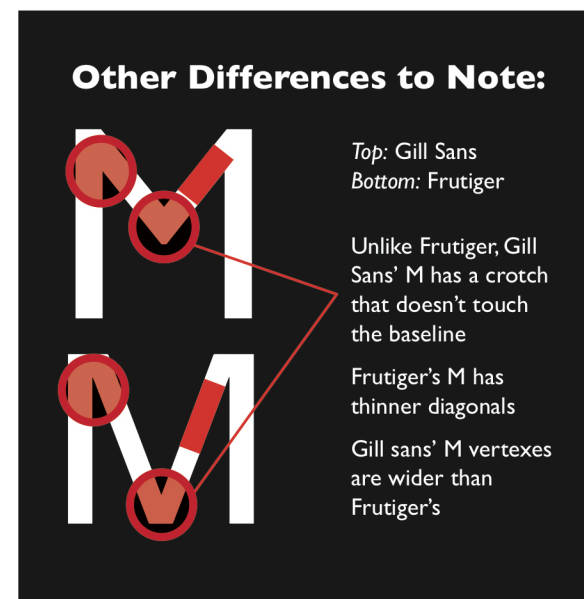
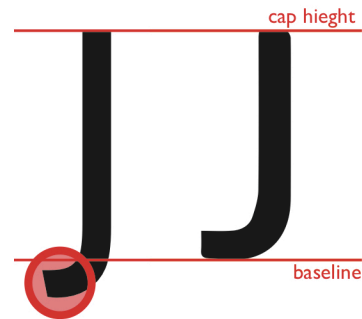
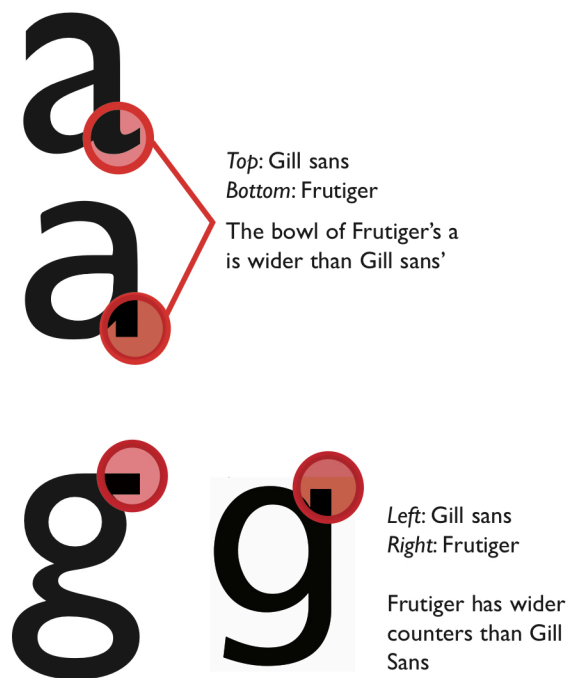


### Did You Know?

Other typefaces that Frutiger designed were Univers, which was the typeface that made him worldly renowned, and Avenir which is one of his best geometric sans serif typefaces

Unlike Frutiger, Gill Sans' uppercase J goes below the baseline. There are also some differences that are a bit harder to notice. In Gill Sans, the uppercase B's top bowl is slightly smaller than its bottom bowl. In Frutiger, both of the bowls in the upper case B are the same size.

Gill sans has a *double* story g, while Frutiger has a *single* story g. Gill Sans upper and lowercase o's have **no contrast**, while Frutiger's upper and lowercase o has a **vertical stress**. Even though they both possess a double story letter a, both a's still have different qualities. The Gill Sans' a has a hooked tail, while Frutiger's a tail goes straight downward.



Signs in Frutiger found at Charles de Gaulle Airport in Paris  
Photographer: Marlene Awaad



A sign in Gill Sans at Barnstaple station  
Via [geograph.org.uk](http://geograph.org.uk) ©  
Copyright Dr Neil Clifton

As these two typefaces were being designed, the designers had one thing in mind: *legibility*. Although these these two typefaces worked as body text, they were going to be used mainly for signages, so they wanted their letters to be seeable and readable from afar.

**Gill Sans**  
ABCDEFGHIJKLMNOPQRSTUVWXYZ  
abcdefghijklmnopqrstuvwxyz

**Frutiger**  
ABCDEFGHIJKLMNOPQRSTUVWXYZ  
abcdefghijklmnopqrstuvwxyz